

AD430 (B509)

This parts catalog includes MB No. 1 to 4

AD430 (B509)

PARTS CATALOG

This catalog gives the numbers and names of parts on this machine.

| | |
|-----------------------------|----------|
| 1.DUPLEX UNIT 1 (B509)..... | 2 |
| 2.DUPLEX UNIT 2 (B509)..... | 4 |
| 3.DUPLEX UNIT 3 (B509)..... | 6 |
| PARTS INDEX | 9 |

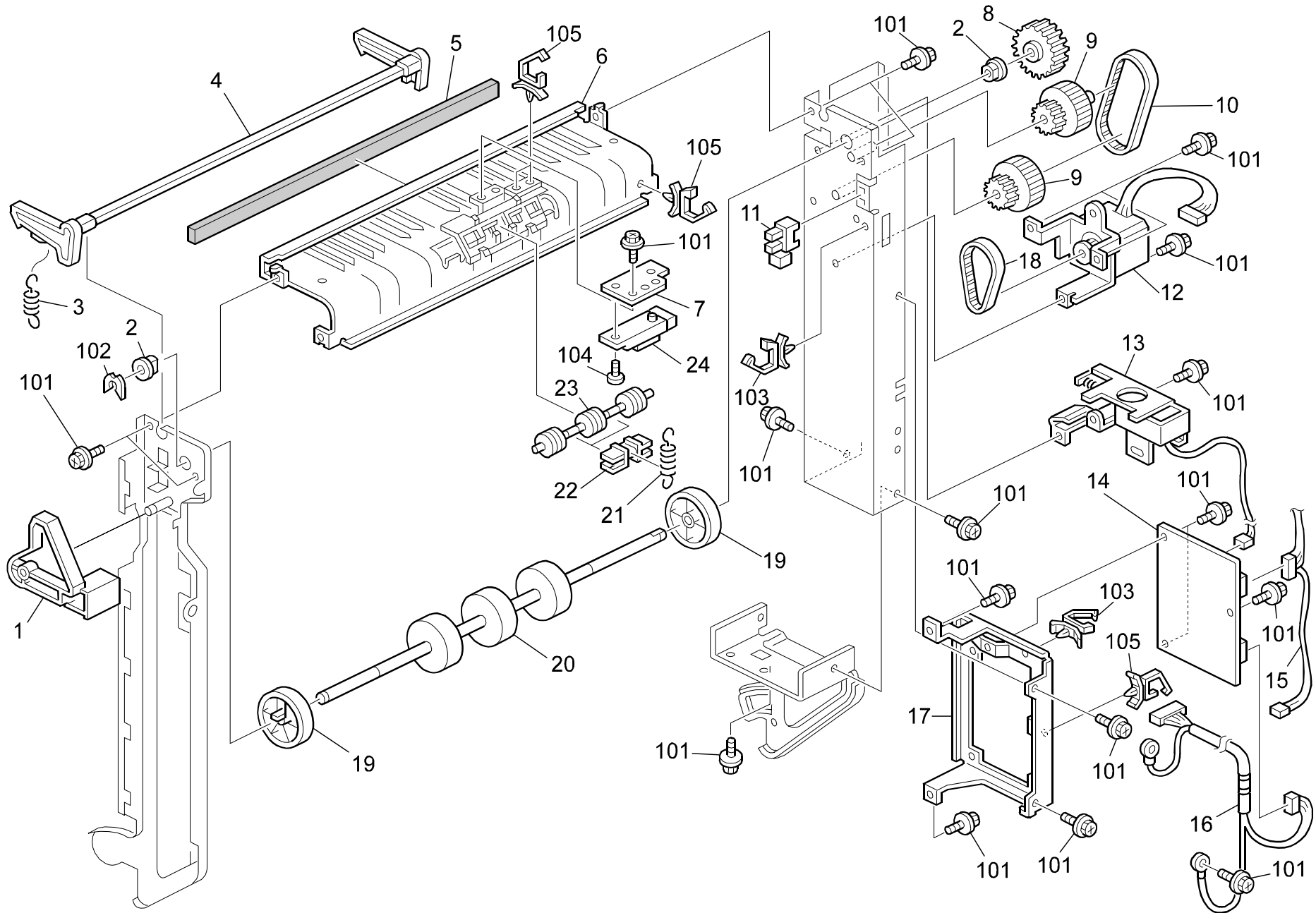
April ,6 ' 2005

1.DUPLEX UNIT 1 (B509)

| Index No. | Part No. | Description | Q'ty Per Assembly |
|-----------|------------------------|--------------------------------------|-------------------|
| 1 | G303 7470 | Guide Plate | 1 |
| 2 | G303 1070 | Stopper Shoe | 1 |
| 3 | G303 7478 | Decal - Duplex 2 | 1 |
| 4 | G303 1060 | Front Bracket | 1 |
| 5 | G303 7500 | Duplex Cover | 1 |
| 6 | AA06 2306 | Pressure Spring | 6 |
| 7 | AA08 0312 | Bushing - 5mm | 6 |
| 8 | AF02 2137 | Driven Transport Roller | 3 |
| 9 | G303 1075 | Rear Bracket | 1 |
| 10 | 5447 2681 | Snap Ring | 2 |
| 11 | G303 1080 | Link Bracket | 1 |
| 12 | G303 7477 G303 7475 | Exchange Powl:Duplex Unit x/o MB4 | 1 |
| 13 | G303 7480 | Exchange Powl Spring | 1 |
| 14 | AG07 0514 AG07 0014 | Magnet Catch:Ass'y x/o MB3 | 1 |
| 15 | G303 7495 | Missfeed Cover | 1 |
| 16 | B509 7505 | Decal - Jam Removal | 1 |

| Index No. | Part No. | Description | Q'ty Per Assembly |
|-----------|------------|----------------------|-------------------|
| 101 | 0451 3008H | Tapping Screw - M3x8 | |
| 102 | 0451 4006H | Tapping Screw - M4x6 | |

2.DUPLEX UNIT 2 (B509)

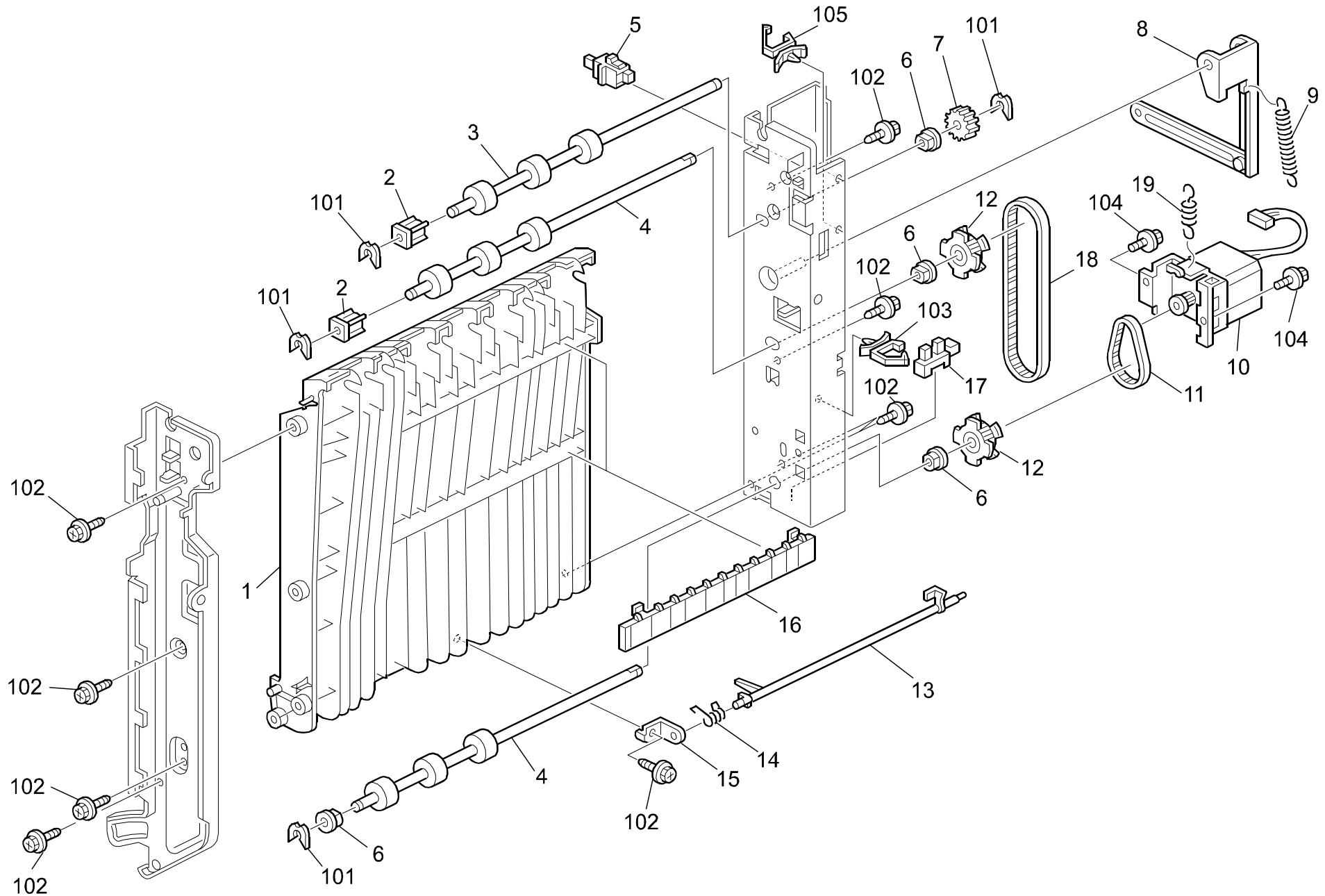


2.DUPLEX UNIT 2 (B509)

| Index No. | Part No. | Description | Q'ty Per Assembly |
|-----------|-----------|-----------------------------|-------------------|
| 1 | G303 7445 | Release Lever | 1 |
| 2 | AA08 2104 | Bushing - 8x12x7 | 2 |
| 3 | G303 7458 | Release Spring | 1 |
| 4 | G303 7450 | Un Lock Pawl | 1 |
| 5 | G303 7268 | Entrance Cushion | 1 |
| 6 | G303 7260 | Reverse Guide Plate | 1 |
| 7 | G303 7435 | Entrance Sensor Bracket | 1 |
| 8 | AB01 4212 | Gear - 38Z | 1 |
| 9 | AB01 7564 | Gear - 17Z/47T | 2 |
| 10 | AA04 3288 | Timing Belt - S2M176 | 1 |
| 11 | AW02 0160 | Paper Feed Sensor | 1 |
| | AW02 0056 | x/o MB3 | |
| 12 | G303 7292 | Stepper Motor:Reverse:Ass'y | 1 |
| | G303 7290 | x/o MB3 | |
| 13 | G303 7421 | Link:DC Solenoid:Ass'y | 1 |
| | G303 7420 | x/o MB3 | |
| 14 | G303 5120 | PCB:DCB2 | 1 |
| | G303 5115 | x/o MB1 | |
| 15 | G303 5337 | Harness:Duplex:Sensor | 1 |
| | G303 5335 | x/o MB3 | |
| 16 | B509 5331 | Harness:Duplex:Unit | 1 |
| | B509 5470 | x/o MB3 | |
| 17 | G303 7360 | Base Bracket | 1 |
| 18 | AA04 3287 | Timing Belt - S2M148 | 1 |
| 19 | A232 4657 | Inverter Roller | 2 |
| 20 | AF02 0638 | Reverse Roller:Duplex | 1 |
| | AF02 0538 | x/o MB3 | |
| 21 | AA06 2306 | Pressure Spring | 2 |
| 22 | AA08 0312 | Bushing - 5mm | 2 |
| 23 | AF02 2137 | Driven Transport Roller | 1 |
| 24 | AW01 0106 | Paper Feed Sensor | 1 |
| | AW01 0048 | o/o MB2 | |

| Index No. | Part No. | Description | Q'ty Per Assembly |
|-----------|------------|-------------------------------|-------------------|
| 101 | 0451 3006B | Tapping Screw - M3x6 | |
| 102 | 0805 0088 | Retaining Ring - M6 | |
| 103 | 1105 0487 | Harness Clamp | |
| 104 | 0313 0060B | Philips Pan Head Screw - M3x6 | |
| 105 | 1105 0511 | Harness Clamp - LWS-0306ZC | |

3.DUPLEX UNIT 3 (B509)



3.DUPLEX UNIT 3 (B509)

| Index No. | Part No. | Description | Q'ty Per Assembly |
|-----------|-----------|-------------------------------|-------------------|
| 1 | G303 7245 | Middle Guide | 1 |
| 2 | AA08 0311 | Bushing - 6mm | 2 |
| 3 | AF02 0539 | Transport Roller - 1st | 1 |
| 4 | AF02 0639 | Transport Roller:Middle:2nd | 2 |
| | AF02 0540 | x/o MB3 | |
| 5 | AW50 0023 | Push Switch | 1 |
| 6 | AA08 2101 | Bushing - 6x10x6 | 4 |
| 7 | AB01 4213 | Gear - 20Z | 1 |
| 8 | G303 7335 | Stopper Arm | 1 |
| 9 | G303 7350 | Link Stopper Spring | 1 |
| 10 | G303 7317 | Stepper Motor:Transport:Ass'y | 1 |
| | G303 7315 | x/o MB3 | |
| 11 | AA04 3287 | Timing Belt - S2M148 | 1 |
| 12 | AB03 0700 | Timing Pulley - 47T | 2 |
| 13 | G303 7440 | Exit Sensor Feeler | 1 |
| 14 | G303 7442 | Exit Sensor Spring | 1 |
| 15 | G303 7441 | Exit Sensor Bracket | 1 |
| 16 | G303 7460 | Relay Guide Plate | 1 |
| 17 | AW02 0160 | Paper Feed Sensor | 1 |
| | AW02 0056 | x/o MB3 | |
| 18 | AA04 3289 | Timing Belt - S2M374 | 1 |
| 19 | G303 7325 | Tension Spring | 1 |

| Index No. | Part No. | Description | Q'ty Per Assembly |
|-----------|------------|----------------------------|-------------------|
| 101 | 0805 0089 | Retaining Ring - M4 | |
| 102 | 0450 3008B | Tapping Screw - M3x8 | |
| 103 | 1105 0487 | Harness Clamp | |
| 104 | 0451 3006B | Tapping Screw - M3x6 | |
| 105 | 1105 0511 | Harness Clamp - LWS-0306ZC | |

Parts Index

Parts Index

| Part No. | Description | Page and Index No. |
|-----------|---------------------|--------------------|
| B509 5331 | Harness:Duplex:Unit | 5 - 16 |
| B509 5470 | x/o MB3 | 5 - 16 |
| B509 7505 | Decal - Jam Removal | 3 - 16 |

| Part No. | Description | Page and Index No. |
|-----------|-------------------------------|--------------------|
| A232 4657 | Inverter Roller | 5 - 19 |
| G303 1060 | Front Bracket | 3 - 4 |
| G303 1070 | Stopper Shoe | 3 - 2 |
| G303 1075 | Rear Bracket | 3 - 9 |
| G303 1080 | Link Bracket | 3 - 11 |
| G303 5115 | x/o MB1 | 5 - 14 |
| G303 5120 | PCB:DCB2 | 5 - 14 |
| G303 5335 | x/o MB3 | 5 - 15 |
| G303 5337 | Harness:Duplex:Sensor | 5 - 15 |
| G303 7245 | Middle Guide | 7 - 1 |
| G303 7260 | Reverse Guide Plate | 5 - 6 |
| G303 7268 | Entrance Cushion | 5 - 5 |
| G303 7290 | x/o MB3 | 5 - 12 |
| G303 7292 | Stepper Motor:Reverse:Ass'y | 5 - 12 |
| G303 7315 | x/o MB3 | 7 - 10 |
| G303 7317 | Stepper Motor:Transport:Ass'y | 7 - 10 |
| G303 7325 | Tension Spring | 7 - 19 |
| G303 7335 | Stopper Arm | 7 - 8 |
| G303 7350 | Link Stopper Spring | 7 - 9 |
| G303 7360 | Base Bracket | 5 - 17 |
| G303 7420 | x/o MB3 | 5 - 13 |
| G303 7421 | Link:DC Solenoid:Ass'y | 5 - 13 |
| G303 7435 | Entrance Sensor Bracket | 5 - 7 |
| G303 7440 | Exit Sensor Feeler | 7 - 13 |
| G303 7441 | Exit Sensor Bracket | 7 - 15 |
| G303 7442 | Exit Sensor Spring | 7 - 14 |
| G303 7445 | Release Lever | 5 - 1 |
| G303 7450 | Un Lock Pawl | 5 - 4 |
| G303 7458 | Release Spring | 5 - 3 |
| G303 7460 | Relay Guide Plate | 7 - 16 |
| G303 7470 | Guide Plate | 3 - 1 |
| G303 7475 | x/o MB4 | 3 - 12 |
| G303 7477 | Exchange Powl:Duplex Unit | 3 - 12 |
| G303 7478 | Decal - Duplex 2 | 3 - 3 |
| G303 7480 | Exchange Powl Spring | 3 - 13 |

| Part No. | Description | Page and Index No. |
|-----------|----------------|--------------------|
| G303 7495 | Missfeed Cover | 3 - 15 |
| G303 7500 | Duplex Cover | 3 - 5 |

| Part No. | Description | Page and Index No. |
|-----------|-----------------------------|--------------------|
| AA04 3287 | Timing Belt - S2M148 | 7 - 11 |
| AA04 3287 | Timing Belt - S2M148 | 5 - 18 |
| AA04 3288 | Timing Belt - S2M176 | 5 - 10 |
| AA04 3289 | Timing Belt - S2M374 | 7 - 18 |
| AA06 2306 | Pressure Spring | 5 - 21 |
| AA06 2306 | Pressure Spring | 3 - 6 |
| AA08 0311 | Bushing - 6mm | 7 - 2 |
| AA08 0312 | Bushing - 5mm | 5 - 22 |
| AA08 0312 | Bushing - 5mm | 3 - 7 |
| AA08 2101 | Bushing - 6x10x6 | 7 - 6 |
| AA08 2104 | Bushing - 8x12x7 | 5 - 2 |
| AB01 4212 | Gear - 38Z | 5 - 8 |
| AB01 4213 | Gear - 20Z | 7 - 7 |
| AB01 7564 | Gear - 17Z/47T | 5 - 9 |
| AB03 0700 | Timing Pulley - 47T | 7 - 12 |
| AF02 0538 | x/o MB3 | 5 - 20 |
| AF02 0539 | Transport Roller - 1st | 7 - 3 |
| AF02 0540 | x/o MB3 | 7 - 4 |
| AF02 0638 | Reverse Roller:Duplex | 5 - 20 |
| AF02 0639 | Transport Roller:Middle:2nd | 7 - 4 |
| AF02 2137 | Driven Transport Roller | 5 - 23 |
| AF02 2137 | Driven Transport Roller | 3 - 8 |
| AG07 0014 | x/o MB3 | 3 - 14 |
| AG07 0514 | Magnet Catch:Ass'y | 3 - 14 |
| AW01 0048 | o/o MB2 | 5 - 24 |
| AW01 0106 | Paper Feed Sensor | 5 - 24 |
| AW02 0056 | x/o MB3 | 5 - 11 |
| AW02 0056 | x/o MB3 | 7 - 17 |
| AW02 0160 | Paper Feed Sensor | 5 - 11 |
| AW02 0160 | Paper Feed Sensor | 7 - 17 |
| AW50 0023 | Push Switch | 7 - 5 |

| Part No. | Description | Page and Index No. |
|------------|-------------------------------|--------------------|
| 0313 0060B | Philips Pan Head Screw - M3x6 | 5 -104 |
| 0450 3008B | Tapping Screw - M3x8 | 7 -102 |
| 0451 3006B | Tapping Screw - M3x6 | 7 -104 |
| 0451 3006B | Tapping Screw - M3x6 | 5 -101 |
| 0451 3008H | Tapping Screw - M3x8 | 3 -101 |
| 0451 4006H | Tapping Screw - M4x6 | 3 -102 |
| 0805 0088 | Retaining Ring - M6 | 5 -102 |
| 0805 0089 | Retaining Ring - M4 | 7 -101 |
| 1105 0487 | Harness Clamp | 5 -103 |
| 1105 0487 | Harness Clamp | 7 -103 |
| 1105 0511 | Harness Clamp - LWS-0306ZC | 5 -105 |
| 1105 0511 | Harness Clamp - LWS-0306ZC | 7 -105 |

| Part No. | Description | Page and Index No. |
|-----------|-------------|--------------------|
| 5447 2681 | Snap Ring | 3 - 10 |